

# Resonance Ltd.

Optical Solutions and Technologies



## The Resonance EUV-X-L Flow Lamp

system can be configured as a windowless source of EUV emissions or with interchangeable LiF or MgF<sub>2</sub> windows. With the interchangeable window the system can be used to produce emissions above the LiF cutoff of 104 nm.

If coupled with a Resonance VM series monochromator, this will work as a tunable light source from 25 nm to up to 800 nm.

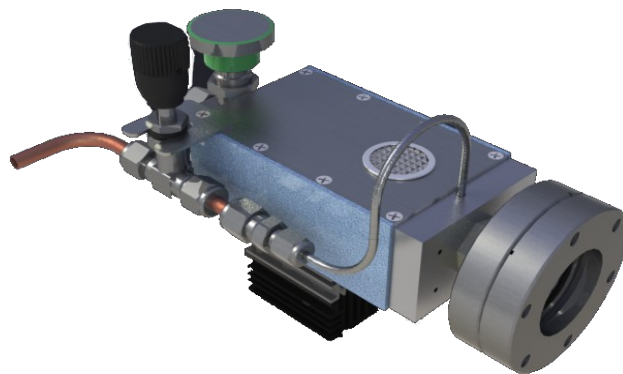
## EUV-X-L Flow Lamp

The Resonance EUV windowless source is an RF excited flow lamp with a capillary bore in an EMI shielded enclosure. This lamp mounts to a 33.78 mm or larger CF type flange.

The lamp assembly has an integral RF exciter which is powered by a small wall plug power supply. This supply is sufficient to produce emissions from the principal neutral rare gas species in the range of  $10^{15}$  photons per second per steradian.

### Features

- Greater than  $10^{15}$  photons/sec/ster for major spectral lines
- Provides EUV light below 25 nm
- < 1 kg mass
- Easy connection to a monochromator for use as an EUV tunable light source

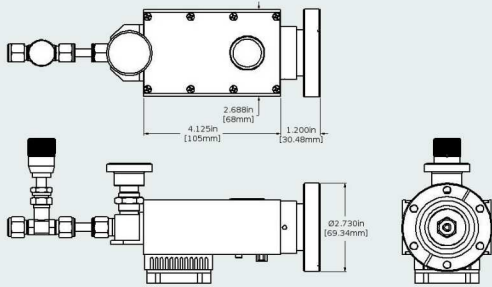


Resonance Ltd

res@resonance.on.ca 1-705-733-3633 www.resonance.on.ca

# Resonance Ltd.

## Optical Solutions and Technologies



Specifications	
Power In	110 to 240 V
Power Supply	20 W RF
Wavelength Range	25 to 800 nm
Current	0.5 A @ 110V max
Mass	800g
Intensity	> 10 <sup>15</sup> photons/sec/str (for major spectral lines)
Vacuum Adapter	2.75in CF flange standard
Major Spectral Outputs	
Species	Wavelength(s) (nm)
He	58.43
Ne	73.59 & 74.37
Ar	104.82 & 106.67
H	102.57 & 121.57
O	130.22, 130.48 & 130.61
N	120
Cl	118
N2	LBH Bands

